



'Uptown Community Portrait 2000' courtesy of Friends of the Uptown

# UPTOWN

## COMMUNITY PORTRAIT

**Noon, Saturday, Aug. 20, 2005, Broadway at Lawrence**

Celebrate the neighborhood and the UPTOWN's 80th anniversary

Smile for a re-creation of the 1925 opening-day photograph

Emcee Marc Smith, Uptown Poetry Slam creator

Entertainment by Quest Theatre Ensemble

Rain or shine • Entertainment & snacks

Sponsored by UCC, UPCORP & Friends of the Uptown

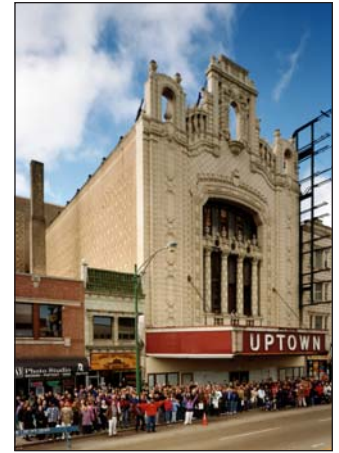
INFO: (773) 878-1064 • (773) 250-7665 • [www.uptowntheatre.com](http://www.uptowntheatre.com)

# Uptown Community Portrait

Noon, Saturday, August 20, 2005

## HERE'S HOW IT WORKS

have fun • smile • be careful of traffic



*Celebrating the Uptown community and the 80th anniversary of the landmark Uptown Theatre  
Sponsored by UCC, UPCORP and Friends of the Uptown*

### ON THE DAY OF THE PORTRAIT

#### On the block

- Free snacks and drinks
- Uptown Chicago Commission info
- UPCORP & Corridors of Vision
- Friends of the Uptown table

#### Also appearing

- Quest Theatre Ensemble
- Theatre Historical Society
- Chicago Police Department
- Chicago Fire Department

#### Broadway at Lawrence

- Photo setup begins at 11:30 a.m.
- Listen to emcee Marc Smith for direction
- Pose for three timed exposures
- Some areas are off-limits

### WHEN YOU GET HOME

#### Order the 1925 photos

- B&W 1925 facade view: #K 9038
- B&W 1925 block view: #K 9037
- 8 x 10, \$25 (includes postage)
- \$10 Uptown Theatre book (28 pages)
- VISA/MC: (630) 782-1800, checks:  
Theatre Historical Society of America  
152 N. York Road, Elmhurst, IL 60126

#### 2000 & 2005 photos

- COLOR Uptown Community Portraits  
Specify (A) 2000, and/or (B) 2005
- 8 x 10, \$15 each (includes postage)
- Make checks payable to:  
'Friends of the Uptown' and mail to  
Compass Rose Cultural Crossroads  
P.O. Box 409095, Chicago IL 60640

#### Stay in touch

[www.uptownchicago.commission.org](http://www.uptownchicago.commission.org)  
[www.upcorp.org](http://www.upcorp.org)  
[www.uptowntheatre.com](http://www.uptowntheatre.com)  
[www.slampapi.com](http://www.slampapi.com) and  
[www.questensemble.org](http://www.questensemble.org)  
[www.compassrose.org](http://www.compassrose.org)



< #K 9038  
2000: A  
2005: B

#K 9037 >

